



VISHWA DECORS

Firefighting, Disaster Management, Road Safety
& industrial Safety Equipments Manufacturers & Distributors

Honeywell Safety Products
Miller Durahoist Safety Systems (Come Along)



VISHWA DECORS

Firefighting, Disaster Management, Road Safety
& industrial Safety Equipments Manufacturers & Distributors



BRANDS



Honeywell



For any queries kindly contact us

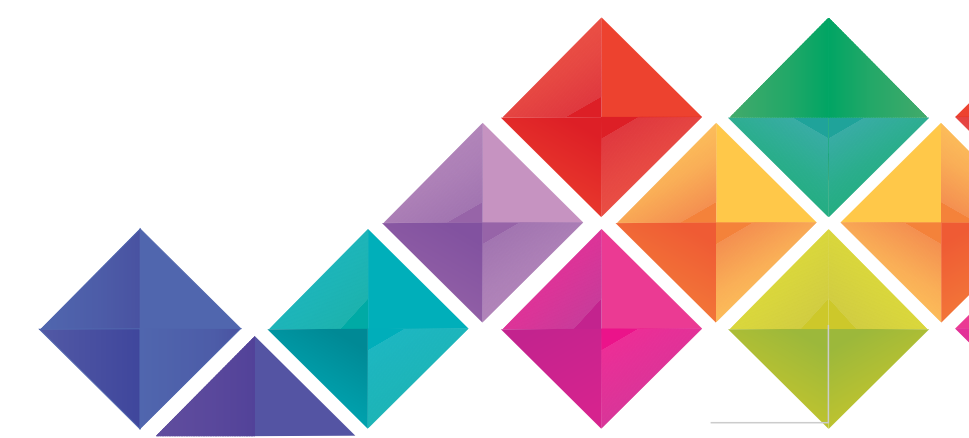
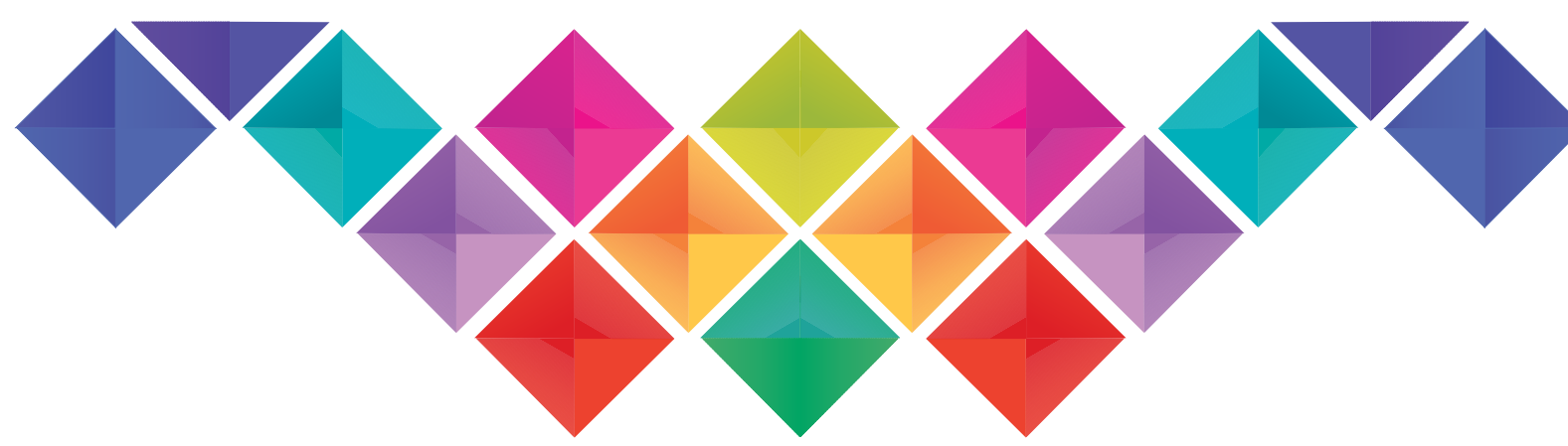
📍 Pagariya Apartment, Ground Floor, Shop No.1, Opp. Arihant Complex, Shailendra Nagar,
Ring Road No. 1, Raipur - 492001, Chhattisgarh, India.

☎ +91-771-2220099 | +91-771-4099940 | 📞 +91-88897-00712/17 | +91-91791-70000

✉ Vishwarpr@yahoo.com | 🌐 www.vishwadecors.com

Follow us on : 📱 vishwadecorsrpr 📱 vishwadecorsrpr





Miller DuraHoist Portable Confined Space System :

- ◆ Designed for manhole and confined space entry/retrieval and fall arrest applications. The modular design allows the use of components in various configurations and applications. Multiple winches and/or lifeline systems may be mounted as required. Lightweight, manageable components for easy storage, transport and set-up. No tools required for assembly.
- ◆ Complete Four-Piece Hoist / Winch System : Designed for manhole and confined space entry/retrieval and fall arrest applications.
- ◆ System breaks down into four lightweight aluminum components for easy storage, transport and set-up. No tools required for assembly.
- ◆ Modular design allows the use of various fixed and portable bases and an optional mast with extensions. Multiple winches and/or lifeline systems may be mounted as required.
- ◆ Four-piece system with ManHandler hoist/winch



- ◆ Overall system height adjusts from 79-in. (2.01m) to 100-in. (2.54m)
- ◆ Mast offset adjusts from 12-in. (.30m) to 29-in. (.74m)

Suggested Applications

- ◆ Public Utilities: Vault and manhole entry, pump/lift/valve stations, water treatment and wastewater industries.
- ◆ General Industry (Food, Chemical, Pulp & Paper): Elevated manholes, storage tanks, platforms/mezzanines, underground vaults, clarifier tanks, pre-heaters.

Features

- ◆ Adjustable Mast Options.
- ◆ Portable & Fixed base options (Different Bases are compatible with all adjustable mast options. All base options include PVC Liner).
- ◆ Vehicle Hitch Mounts (Designed to install into a 2-in. receiver on an attendant vehicle to provide a portable anchor point for confined space entry/retrieval, rescue and fall arrest applications.
- ◆ Different Winch & Hoist Mounting Brackets
- ◆ Durahoist Equipment Cart
- ◆ Wheel Kit for three Piece base

Miller DuraHoist Portable Fall Arrest & Extension Post

- ◆ Provides three independent swivel tie-off points for fall arrest anchorage. (Three worker maximum in any configuration)
- ◆ Three-stage/four-position telescoping design and aluminum construction for easy transportation and set-up.
- ◆ Leveling screws allow the system to be plumbed to vertical on inclines up to 15 degrees
- ◆ Portable and fixed bases allow for versatile usage.
- ◆ Telescoping design allows overall height to be adjusted in three stages from 32.75-in. (0.83m) to 57.25-in. (1.45m).
- ◆ Weight of the Portable fall arrest post is 17.2 Kg. & Extension post 14 in. 2 Kg.
- ◆ Provides option to tie-off one worker at an increased height of 68.5-in. (1.74m)

Suggested Applications

Electrical transformers, leading edge deck work, confined space and rescue, industrial presses, bridge cranes, large cranes, limited horizontal lifeline applications.



Miller Rescue / Material Handling Davit Arm :



- ◆ Designed for rescue and material handling applications.
- ◆ Quick-attach design assembles easily.
- ◆ Lightweight aluminum construction makes davit arm easy to transport and set-up.
- ◆ Weight of Rescue / Material Handling Davit Arm is 9.3 Kg.

Miller TechLine™ Temporary Horizontal Lifeline Kits :



System offers continuous fall protection for the length of the lifeline when used in conjunction with DuraHoist Fall Arrest Posts. Ideal for applications where an overhead anchorage does not exist.

Kits include

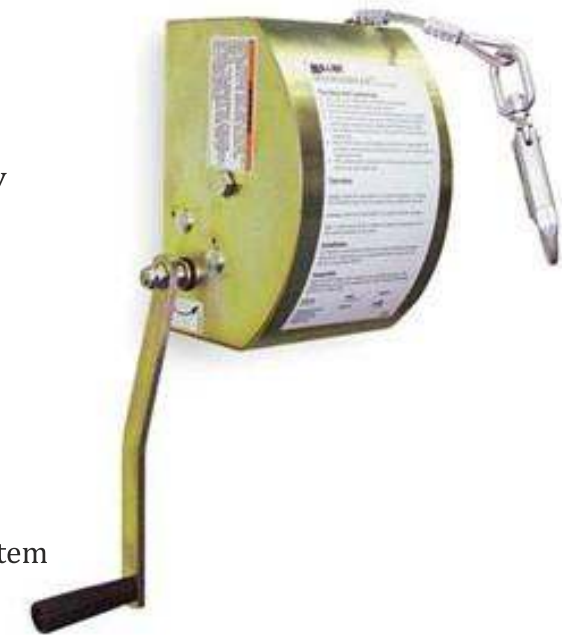
- ◆ 5/8-in. (.02m) polyester rope lifeline
- ◆ Line adjuster/tensioner
- ◆ Connecting ring(s)
- ◆ Snap hook
- ◆ In-line shock absorber (two worker kits only)
- ◆ Kit available in 30ft. for 1 Worker & 60 Ft. for two worker's

Anchor Base & Anchor Plates

- ◆ Portable anchor Base
- ◆ Portable & Fixed Anchor Plates
- ◆ Fixed Anchor Plates (Designed to be permanently welded to existing structures in locations of frequent work, or where the use of a portable base is impractical. Plates for inclined surfaces can be customized to your specific incline requirements up to a maximum of 45 degrees)

Miller ManHandler Hoists :

- ◆ The perfect solution for confined space entry, rescue, positioning and personnel/material handling. A secondary fall arrest system is recommended for fall protection.
- ◆ 350 lbs. (159kg) working capacity.
- ◆ Compact, durable steel construction.
- ◆ Effortless lifting and lowering with 5:1 gear ratio. Anti-backlash crank handle braking system.
- ◆ Compatible with DuraHoist™ Portable Confined Space System & DuraHoist Rescue/Material Handling Davit Arm



Miller MightyEvac® Self-Retracting Lifelines (SRL)w / Emergency Retrieval Hoist



- ◆ Combines the superior performance and reliability of the Miller MightyLite™ SRL with a quick-activating retrieval mechanism for emergency evacuation.
- ◆ No annual factory recertification required* – Significant long-term savings/lower cost of ownership
- ◆ 310 lbs. (141kg) weight capacity
- ◆ For emergency evacuation only
- ◆ Compatible with DuraHoist Portable Confined Space System & DuraHoist Rescue/Material Handling Davit Arm